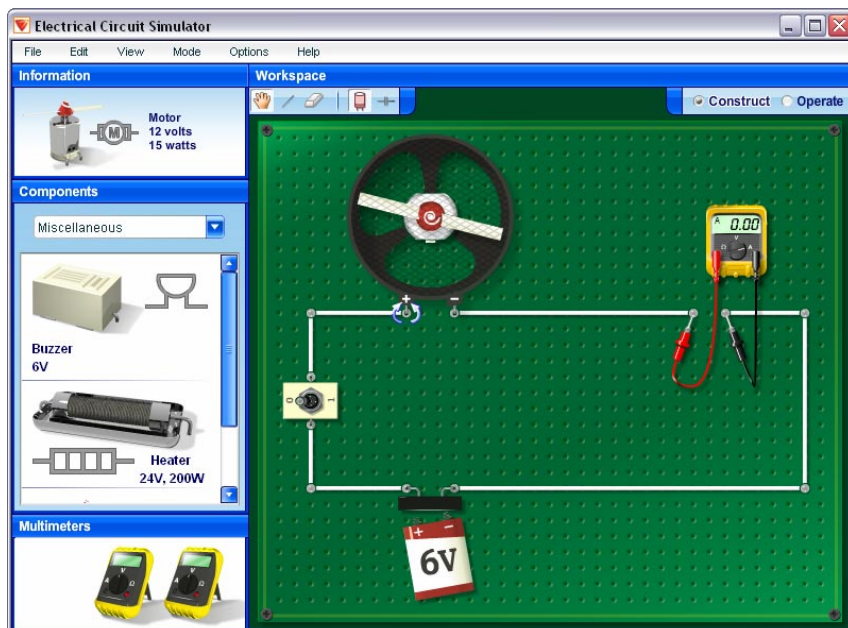
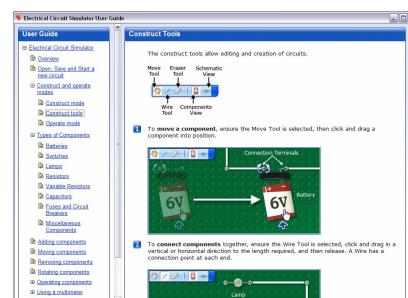




Virtual Electrical Circuits Trainer



User Guide



The simulator includes a user guide, which explains how to build and test the electrical circuits.

This interactive simulator enables students to build their own circuits using any combination of electrical components.

Circuits can be operated and multimeters can be used to test voltage, current and resistance.

The library of components includes batteries, switches, lamps, resistors (fixed and variable), capacitors, fuses, circuit breakers, buzzers, heaters and motors.

Circuits can be viewed and built in either a component view or a schematic view.

The component library contains:

Batteries

1.5V, 6V, 9V and 12V

Switches

Push to make
Push to break
On-Off
Two position, single pole
Three position, single pole
Three position, double pole
Thermal
Relay

Lamps

6V, 5W clear
12V, 10W clear
12V, 20W clear
12V, 20W red
12V, 20W yellow
12V, 20W blue

Resistors

10 Ω , 5W
50 Ω , 5W
100 Ω , 5W
500 Ω , 5W
1k Ω , 5W
5k Ω , 5W
10k Ω , 5W

Variable Resistors

10 Ω
25 Ω
50 Ω
100 Ω
1k Ω
10k Ω

Capacitors

500 μ F
1mF
5mF
50mF
100mF
500mF
1F

Fuses

0.5A, 1A, 1.5A, 2A, 3A, 4A, 5A, 7.5A, 10A

Circuit Breakers

0.5A, 1A, 5A, 10A

Miscellaneous

6V Buzzer
24V, 200W Heater
12V, 15W Motor

Minimum Computer Requirements

- Windows® 2000 or later
- 50 MB free hard disk space
- Flash Player v9 or later (supplied on CD)

Languages Supported

- English (US)
- English (GB)
- Spanish

Order as:

VELEC1/SL Virtual Electrical Circuits Trainer
Site License