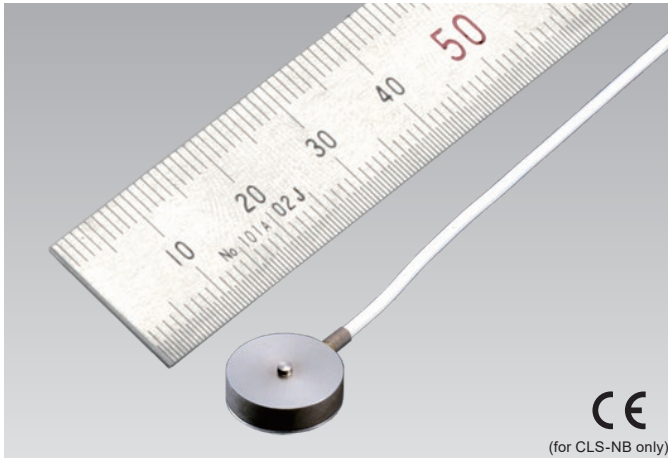


## CLS-NA/CLS-NB Compression Load Cell

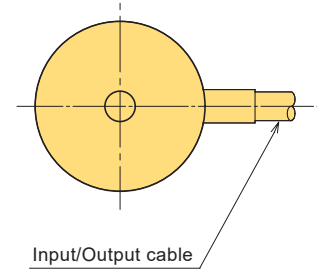
### 2N~10kN



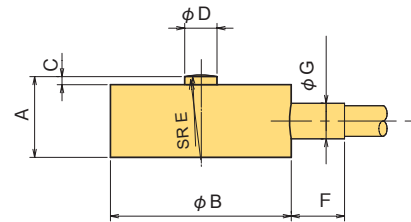
The CLS-NA and CLS-NB Load Cells are ultracompact load cells with capacities ranging from 2N to 10kN. They are widely used for measuring load distribution or loads in structural mockup testing and as a sensor for industrial machinery.

Protection ratings: IP41 equivalent    CLS-2NA/CLS-5NA  
IP53 equivalent    Others

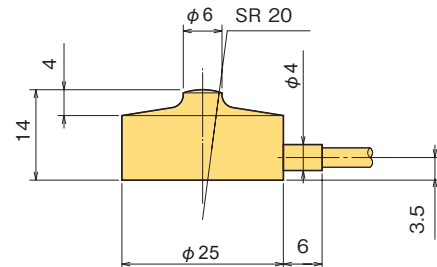
**Ultracompact**  
**Light weight**



CLS-2NA~5KNB



CLS-10KNB



### ■ DIMENSIONS

TYPE	A	φB	C	φD	E	F	φG
CLS-2NA	4	12	0.7	1.5	2	4	1.8
CLS-5NA	4	12	0.7	1.5	2	4	1.8
CLS-10NA	4	12	0.7	1.5	2	4	1.8
CLS-20NA	4	12	0.7	1.5	2	4	1.8
CLS-50NA	4	12	0.7	1.5	2	4	1.8
CLS-100NA	4	12	0.7	1.5	2	4	1.8
CLS-200NB	9	20	1	2.5	8	6	4
CLS-500NB	9	20	1	2.5	8	6	4
CLS-1KNB	9	20	1	2.5	8	6	4
CLS-2KNB	10	20	1.5	3	8	6	4
CLS-5KNB	12.5	25	2	4	10	6	4
CLS-10KNB	As per the figure						

### ■ SPECIFICATIONS

TYPE	CLS-2NA	CLS-5NA	CLS-10NA	CLS-20NA	CLS-50NA	CLS-100NA	CLS-200NB	CLS-500NB	CLS-1KNB	CLS-2KNB	CLS-5KNB	CLS-10KNB
Capacity	2N	5N	10N	20N	50N	100N	200N	500N	1kN	2kN	5kN	10kN
Rated Output	1mV/V (2000×10 <sup>-6</sup> strain) ±20% *						1.5mV/V (3000×10 <sup>-6</sup> strain) ±10%					
Non-linearity	1%RO						0.5%RO					
Hysteresis	1%RO						0.5%RO					
Natural frequency	10kHz	20kHz	16kHz	30kHz	40kHz	50kHz	40kHz	50kHz	50kHz	60kHz	50kHz	40kHz
Temperature effect on zero	0.2%/RO/°C						0.1%/RO/°C					
Temperature effect on span	0.05%/°C											
Compensated temperature range	-10 ~ +60°C											
Allowable temperature range	-10 ~ +60°C											
Over load	150%											
Ultimate overload rating	300%		500%				300%					
Input/Output resistance	350Ω±2%						350Ω±1%					
Recommended exciting voltage	2V or less											
Allowable exciting voltage	5V											
Zero balance	200%RO		150%RO				100%RO					
Weight	1g	1g	3g	3g	3g	3g	12g	12g	12g	12g	40g	40g

Input/Output cable : CLS-NA φ 1.3mm 0.03mm<sup>2</sup> 4-core vinyl cable 2m

: CLS-NB φ 3mm 0.05mm<sup>2</sup> 4-core shielded chloroprene cable 2m

NB \* : Tolerance of rated output for CLS-2NA and CLS-5NA is ±30%.