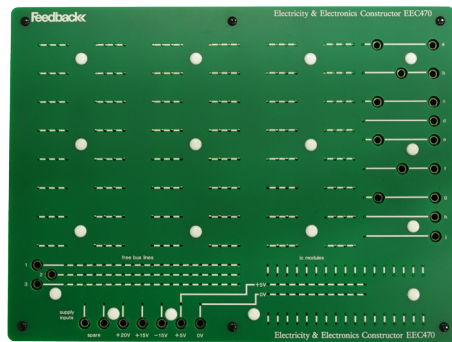
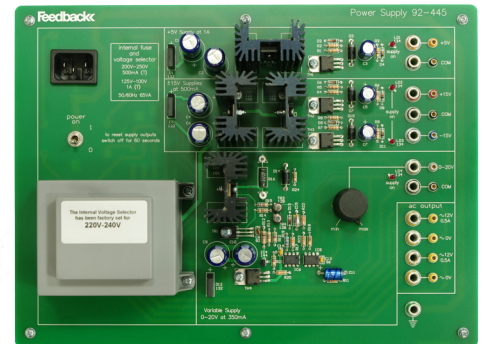


EEC470 SERIES

Circuit trainer work boards



EEC470 - Electricity & electronics
Constructor Deck



92-445 - ac/dc Comprehensive power
supply

Features - EEC470

- Choice of training methodology - Conventional or Virtual instrumentation
- Identification of individual components
- Choice of power supply options
- Fully protected supply outputs
- Mixed work board (A and B) student stations possible
- All necessary power supplies provided
- Low cost power supply option
- Can be used with own instrumentation
- Virtual instruments option
- Additional work boards can be added at a later date
- Common delivery platform options

A. Self construction circuit trainers

EEC470 series consist of discrete components mounted on small printed circuit carriers, from 2-pin devices through to 16-pin integrated circuits. Power semi-conductor components, in many circumstances, are mounted on plug-in heat sinks. Other large components and assemblies have metal or large PCB carriers.

This series of products is used with the Electricity & Electronics Constructor Deck EEC470. The carrier-mounted components are plugged into the deck's spring contact matrix to build the circuit to be investigated.

B. Pre-mounted circuit trainers

OAT343 through to 13 series products have pre-mounted components on the circuit boards, conveniently laid out in a circuit format that requires the minimum amount of interconnection. There is very little preparation required by the student to start the assignments, which leaves maximum time for investigation of the assignment objectives.

Both categories of work boards require an external power supply that can be provided by one of two options:

EEC470 - requires 92-445 series power supply, Pre-mounted - 01-100 trainers or 92-445.



Electricity
and
Electronics