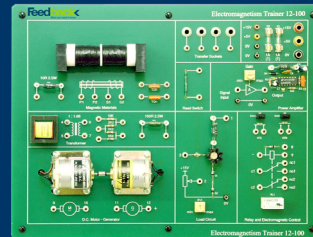


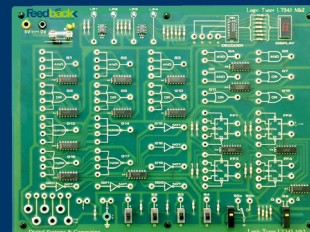
The Electromagnetism Trainer provides an introduction to the application of magnetic fields through the use of various components and materials. The practical exercises cover many of the topics required to be addressed in this subject area that appear in course curriculum for electricity and electronics study. 12-911 covers the curriculum for the 12-100.

A component-level board featuring a range of commercial integrated circuits containing various basic logic gates that can be inter-connected to form combinational and sequential digital circuits. I

Included on the board are input switches LEDs and a seven segment alpha-numeric display. 12-905 covers the curriculum for the LT345 MkII.



12-100



LT345 MkII

### Subject Areas - LT345 Mk II

- Binary Numbers Basic Logic Operations
- Combinational Logic Karnaugh Maps
- The Simple Latch
- Clocked Flip-Flops
- The JK Flip-Flop
- Equivalence
- Non-equivalence and other circuits Binary Addition
- Registers
- Synchronous Counters
- Asynchronous Counters
- Codes & Code Converters
- 7-Segment Display

### Subject Areas - 12-100

- RMS value of an ac waveform
- Power at ac
- Electromagnetic induction
- Inductance
- Inductive circuit at ac Inductive reactance Series resonance
- Parallel resonance
- The Transformer
- Magnetic circuits & materials
- Magnetic reed switches
- Relays
- Latched relay motor control dc motor characteristics
- dc generator